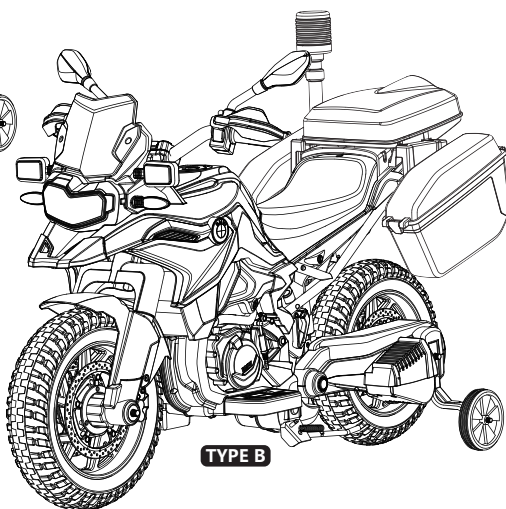
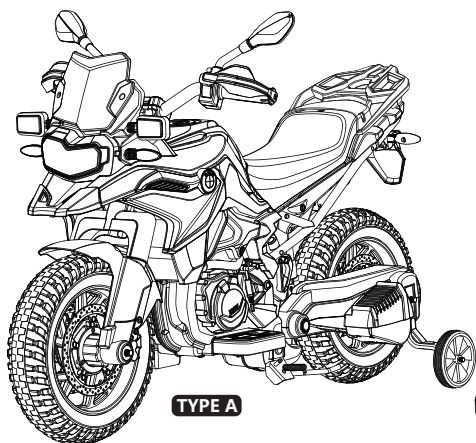


BMW F 850 GS F 850 GS-P

BATTERY POWERED MOTORCYCLE



Owner's Manual with Assembly Instructions

Styles and colo(u)rs may vary.
Made in China.

The owner's manual contains important safety information as well as assembly, use and maintenance instructions.

The Ride-on Car must be assembled by an adult who has read and understands the instructions in this manual.

Keep the package away from children and dispose of properly before use.

Keep this manual for future reference.

On the purchase of your new BMW Ride-On.

This ride-on will provide your child with many miles of riding of enjoyment. To help assure you and your rider a safe ride we ask you to please read this manual carefully, and keep it for future reference.

Follow the recommendations in this manual, they are designed to improve the safety and operation of your ride-on car and it's rider.

BMW F 850 GS (-P) Children Battery Powered Motorcycle manufactured by Zhejiang Jiajia Ride-On Co., Ltd. (Add: Xincang Industrial Zone, Pinghu City, Zhejiang Province, P.R.China). The BMW logo and the BMW word mark are trademarks of BMW AG and are used under license.

SPECIFICATIONS:

Battery	12V7AH*1
Charger	12V1000mA

Suitable age:	37-96 months
Load Capacity:	Under 30kg
Speed:	3-6 km/h
Size of car:	TYPE A: 111 x 62 x 76 CM TYPE B: 112 x 62 x 76 cm
Power way:	Charging type
Charge time:	8-12 hours

 **WARNING!**

- **ADULT ASSEMBLY REQUIRED.**
- **CHOKING HAZARD** - Small parts. Not suitable for children under 36 months. The product contains small parts, keep children away when assembling.
- To reduce the risk of injury, adult supervision is required. Never use in roadways, near motor vehicles, on or near steep inclines or steps, swimming pools or other bodies of water, always wear shoes, and never allow more than 1 rider.
- Always remove protective material and poly bags and dispose before assembly.
- Protective equipment should be worn. Always wear shoes and sit in the seat when operating the vehicle.
- Never leave a child unattended.
- Keep your hands, hair, and clothes away from moving parts.
- Use only battery(ies) and charger specified by the manufacturer
- The battery is not replaceable.

 **SAFETY**

The following safety hazards may result in serious injury or death:

- Never leave child unattended. Direct adult supervision is required. Always keep child in view when child is in vehicle.
- Never use in unsafe conditions such as snow, rain, loose dirt, mud, sand, or gravel, otherwise may result in an unexpected accident such as tipping over, and could damage the electrical system or battery.
- Only drive on level ground. Never use on the lawn.
- Not to be used in traffic.
- This toy should be used with caution since skill is required to avoid falls or collisions causing injury to the user or third parties.
- This toy is unsuitable for children under 36 months due to its maximum speed; Maximum user weight is 30kg.
- This toy has no brake.

 **BATTERY INFORMATION**

- Non-rechargeable batteries are not to be recharged.
- Rechargeable batteries are to be removed from the toy before being charged.
- Rechargeable batteries are only to be charged under adult supervision.
- Different types of batteries or new and used batteries are not to be mixed.
- Batteries are to be inserted with the correct polarity.
- Exhausted batteries are to be removed from the toy.
- The supply terminals are not to be short-circuited.

Parts List | 3

PART NO.	PART NAME	Q'ty (pcs)		REMARKS
		TYPE A	TYPE B	
1	Vehicle body	1	1	
2	Face guard	1	1	
3	Side wheel	2	2	
4	Ø4x12 screw	10	10	
5	Ø12 washer	2	2	
6	Locknut	2	2	
7	Seat	1	1	
8	Handle bar	1	1	
9	M5x35 machine screw	1	1	
10	Ø5 nut	1	1	
11	Mirror	2	2	Left and right
12	Luggage rack	1	\	
13	Front wheel	1	1	
14	Charger	1	1	
15	Socket wrench	2	2	
16	Luggage box	\	1	
17	Side box	\	2	Left and right
18	Pole warning light	\	1	

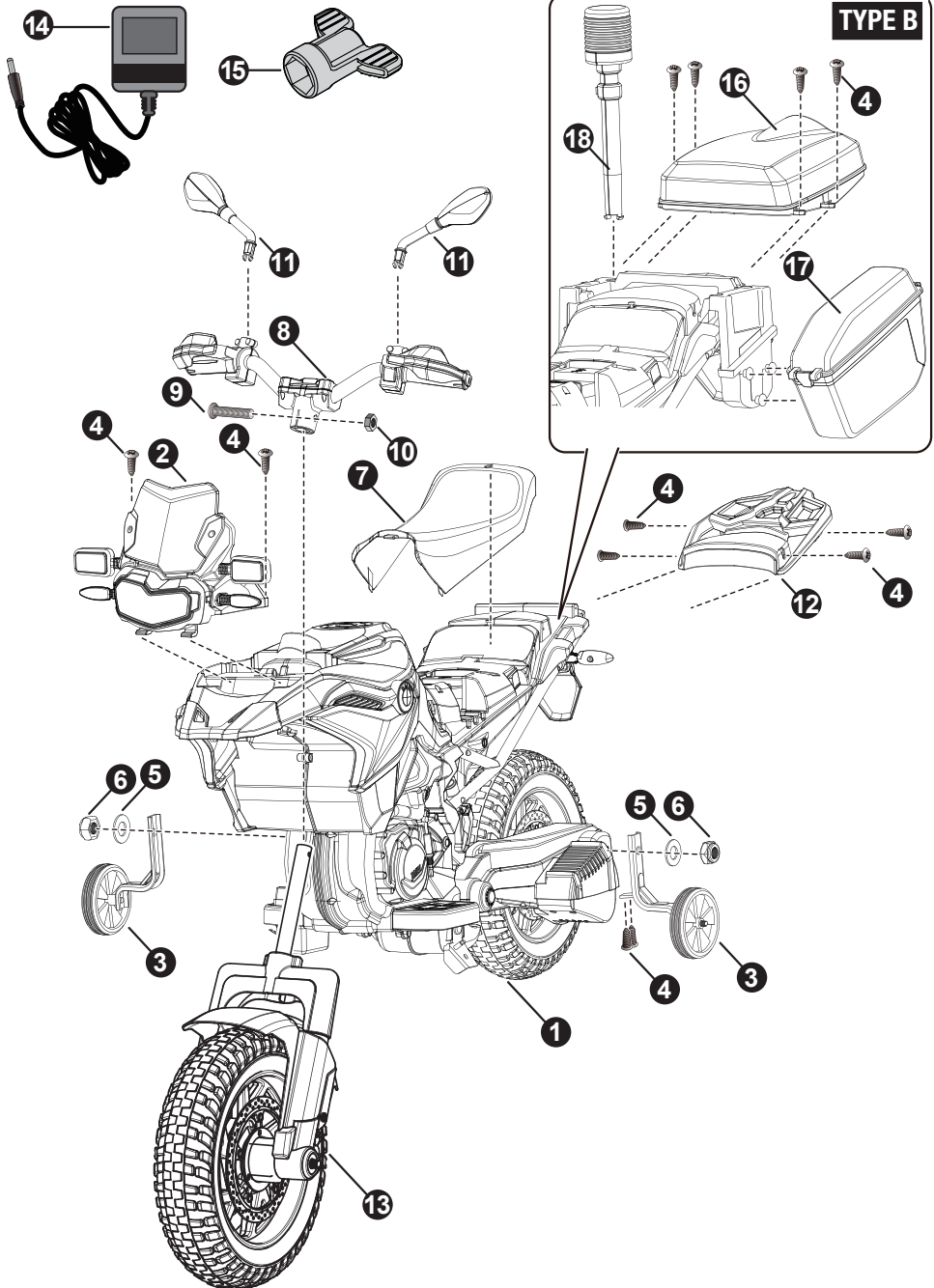
Assembly tools required (not included):

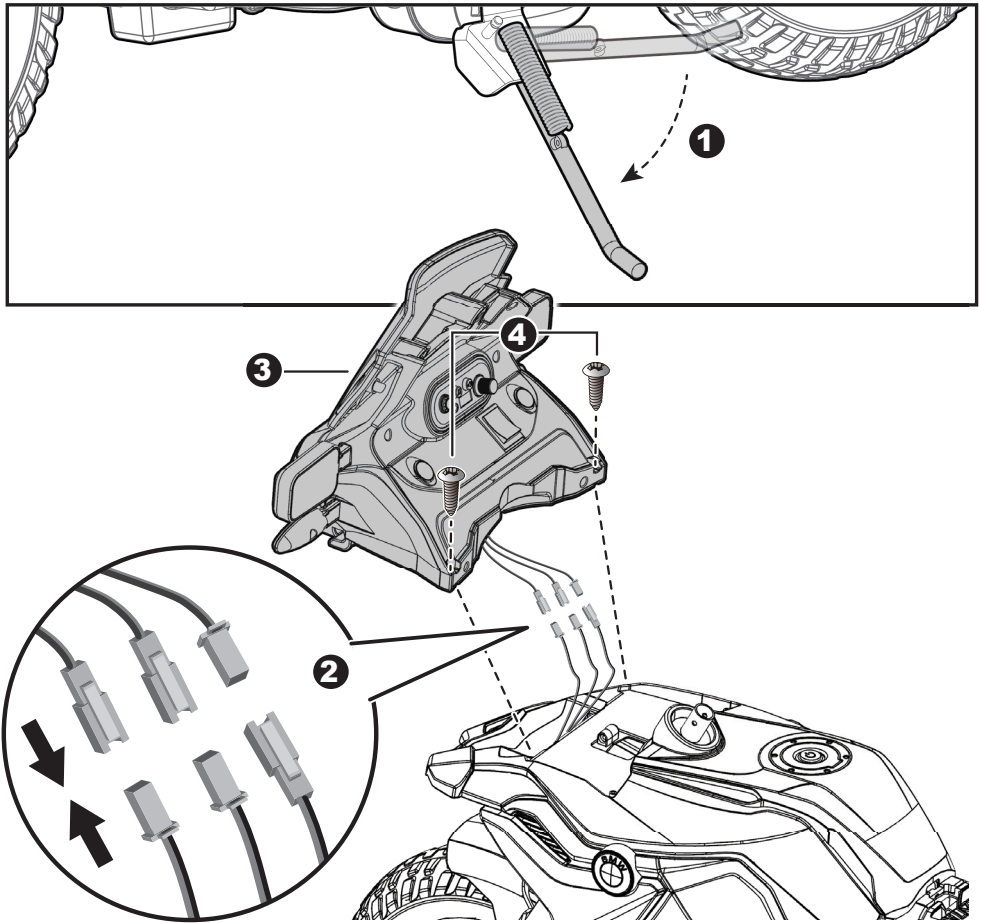


Screwdriver

Parts diagram | 4

HINT: Some parts shown are assembled on both sides of vehicle





1. Open the kickstand on the left side of the body so that it can be placed on flat ground.
2. Plug the connectors on the faceguard into the connectors from the vehicle body.
REMEMBER: yellow black to yellow black, red black to red black.
And hide connectors into the hole in the vehicle body.
3. Fit the faceguard to the vehicle body.
4. Use a screwdriver to tighten two $\varnothing 4 \times 12$ screws to secure it.

Attach the Front Wheel & Handle bar | 6

1. Insert the front wheel iron pipe through the hole in the bottom of the front wheel. And make sure that the limit stopper under the body fits into the limit slot on the front wheel fender.

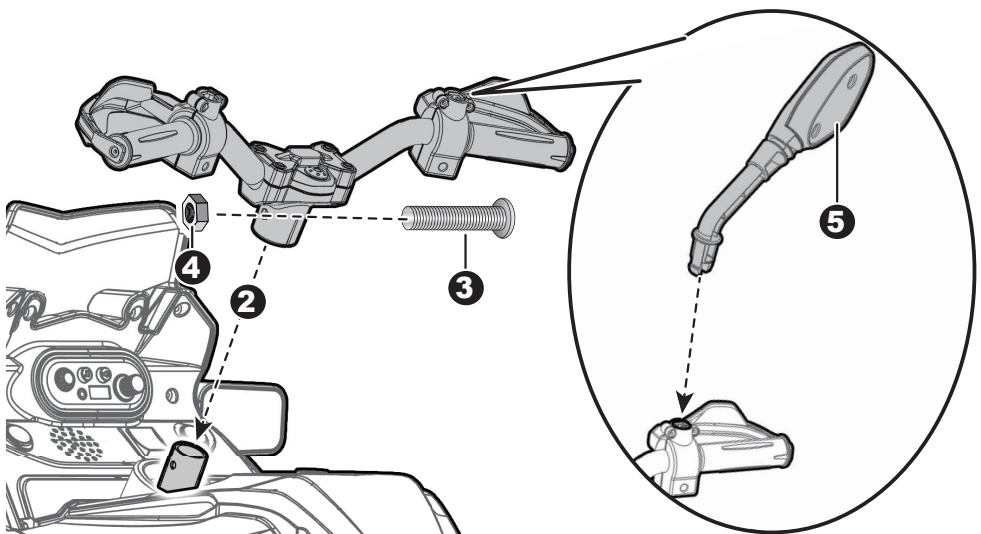
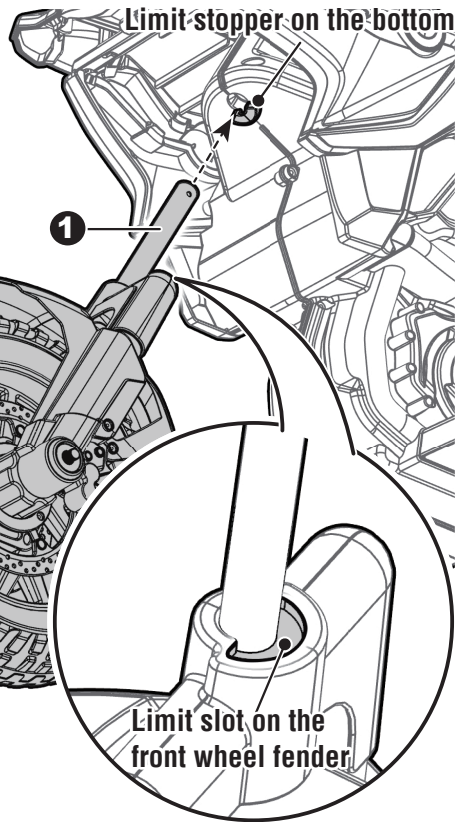
Remove the M5x35 machine screw and Ø5 nut from the fork tube.

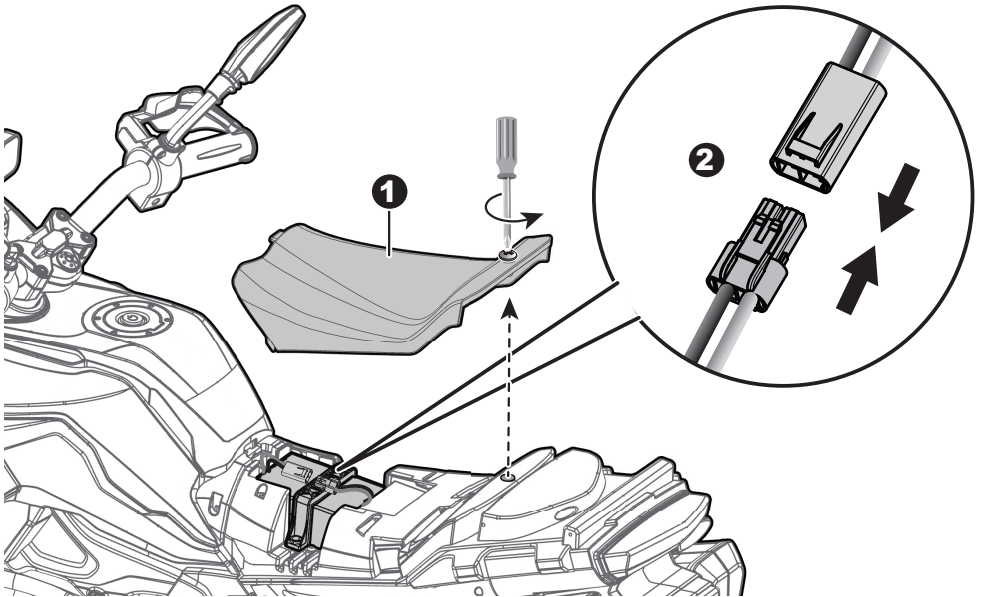
2. Fit the handlebar to the fork tube on the front wheel assembly.

3. Align the holes on each side of the handle bar with the holes at the front fork. Insert the M5x35 machine screw.

4. Fasten a Ø5 nut on the opposite end of the screw to secure the handle bar to the front fork.

5. Fit a mirror to the each hole on the top of the handle bar, push until you hear it "click" into place.

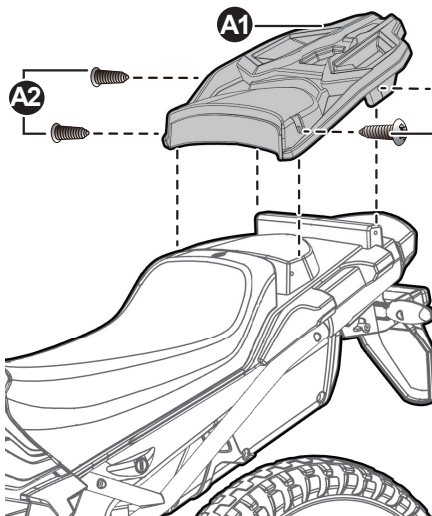




1. Loosen the screws on the top of the seat with a screwdriver and remove the seat.
2. Plug the connector on the vehicle body into the connector from the battery. And replace the seat.

Attach the Luggage rack (TYPE A)

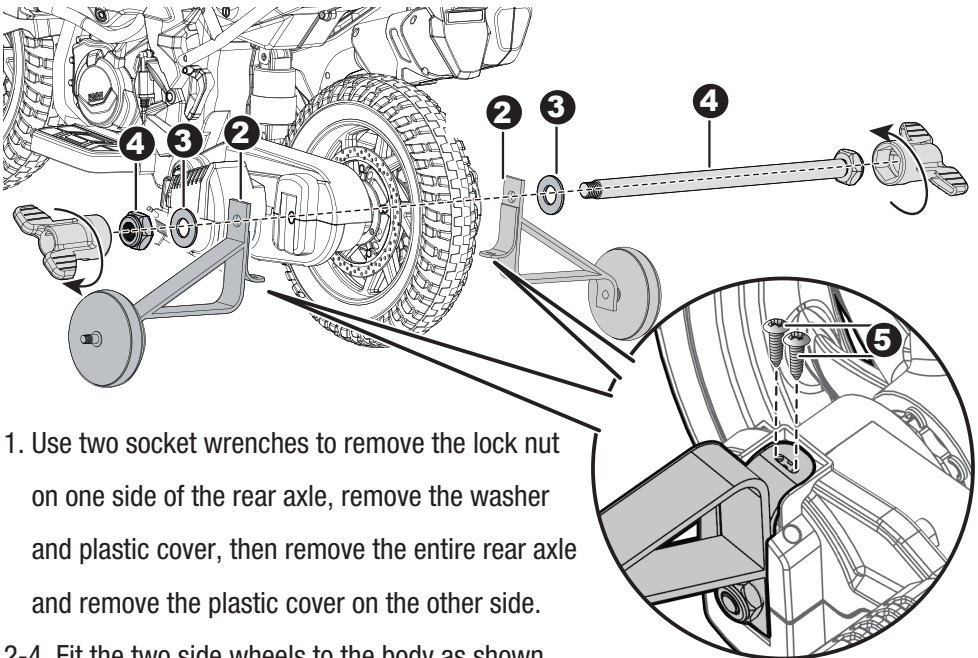
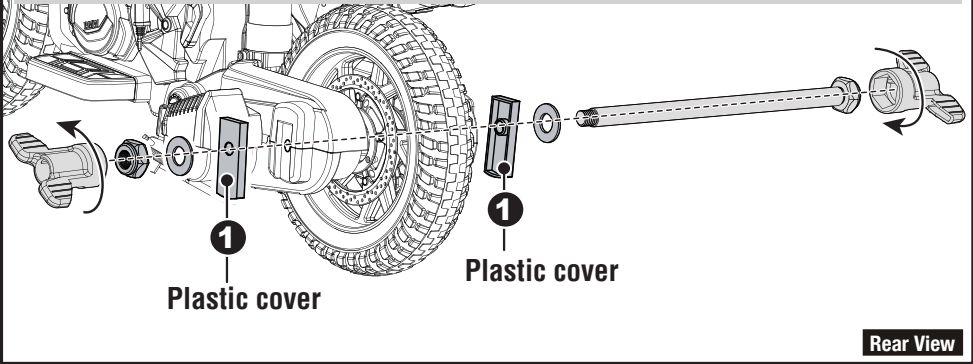
The following steps are only for type A, if yours is type B, please refer to page 9.



A1. Fit the luggage rack to the rear of the vehicle body.

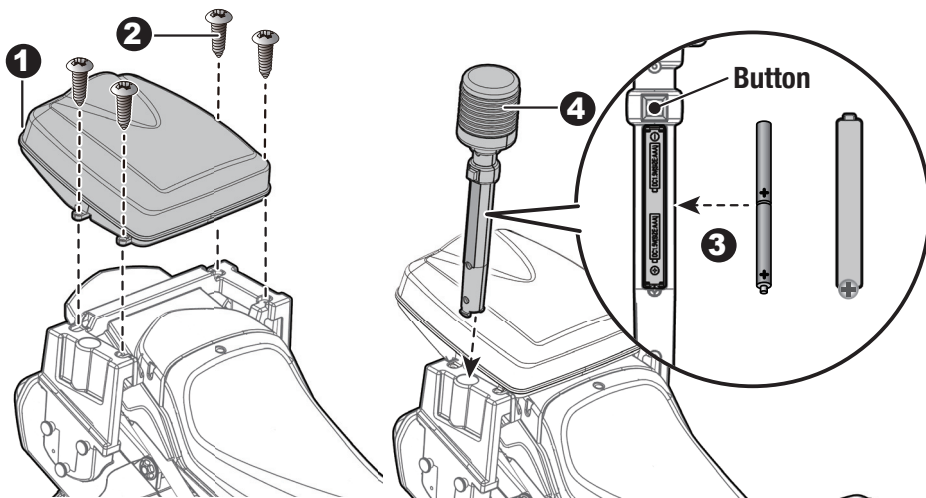
A2. Insert four $\varnothing 4 \times 12$ screws and tighten with screwdriver.

If you need side wheels when using this product, please assemble them as follows. Keep the removed plastic covers for future use. As the child grows up, if the side wheels are no longer needed in the future, please replace the plastic covers back.



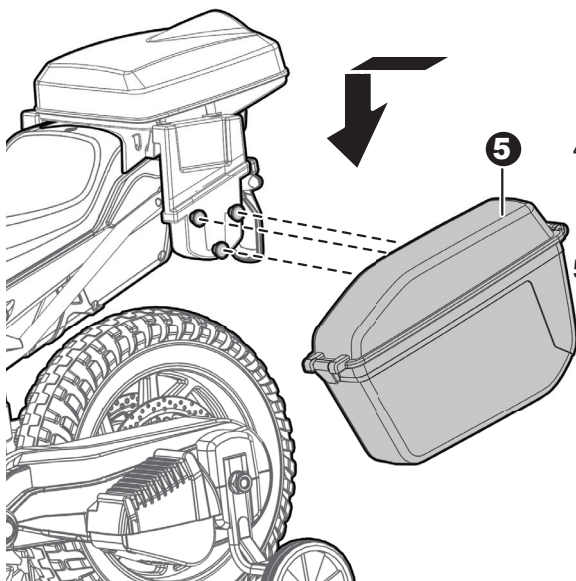
1. Use two socket wrenches to remove the lock nut on one side of the rear axle, remove the washer and plastic cover, then remove the entire rear axle and remove the plastic cover on the other side.
- 2-4. Fit the two side wheels to the body as shown, and use two socket wrenches to tighten the lock nut.
5. Turn the product on its side. Tighten two $\varnothing 4 \times 12$ screws from the bottom of each side wheel.

The following steps are only for type B, if yours is type A, please refer to page 7.

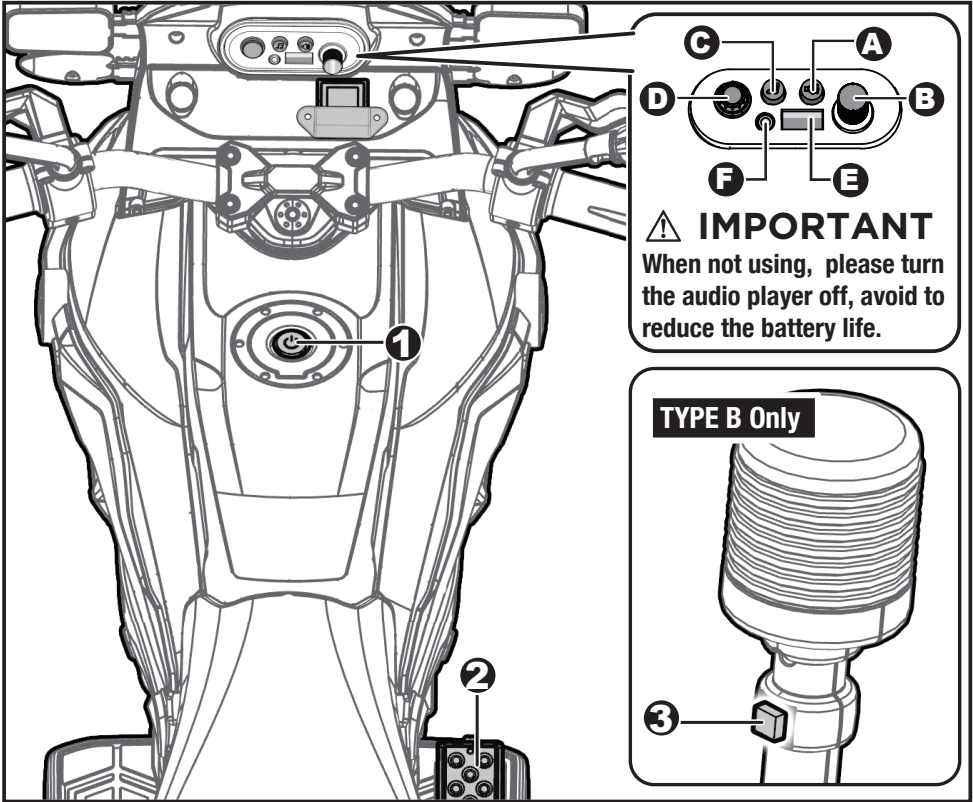


1. Fit the luggage box to the rear of the vehicle body.
2. Tighten four $\varnothing 4 \times 12$ screws to secure it to the vehicle body.
3. Use a screwdriver to loosen the screw on the battery cover on the side of the warning light and remove the battery cover. Correctly insert two AAA (LR3) batteries (**Not Included**) according to the polarity markings inside the battery compartment. Put the battery cover back to the

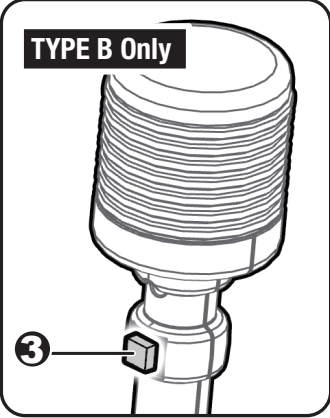
warning light. Finally press the button to check if the warning light is working properly. **HINT: refer to the battery information on page 2.**



4. Insert the pole warning light into the hole in the vehicle body, and push until it "click" into place.
5. Fit the side tool box to the vehicle body, and ensure you hear it "click" into place. **HINT: the side tool boxes are designed to assemble to the vehicle body in only one way.** Repeat for the other side tool box.



⚠ IMPORTANT
 When not using, please turn the audio player off, avoid to reduce the battery life.



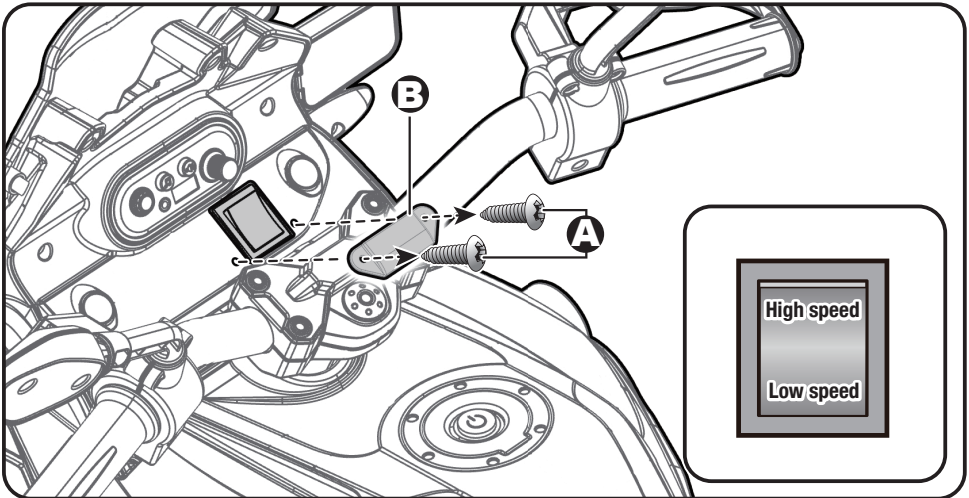
- 1. **Power button:** Turns the vehicle on and off.
- 2. **Throttle pedal:** Applies power (speed) to the product.
 - To move the product, press the button down.
 - To brake or slow down, release pressure from the button.
- 3. **TYPE B only, Pole warning lamp button:** Turns the lamp on and off.
- A. **Sound buttons:** Press for sounds playing.
- B. **Volume knob:** Turn the audio player on and off, +/- the volume.
- C. **Music / Wake button:** Press for music playing.

TIP: This player has an power-saving function. If it is idle for three minutes when it is turned on, the player will enter sleep mode. Press this button to wake up the player from sleep mode.

- D. **Study / Nursery rhyme button.**
- E. **Device 1 input.**
- F. **Device 2 input.**

⚠ IMPORTANT

- The High Speed Protective cover must be removed by an adult.
- Before remove the HIGH SPEED protective cover: Make sure your child knows how to steer, how to start and stop the product and knows the rules for safe driving.



A. Remove the two screws on the top of the high speed protective cover with a screwdriver.

B. Remove the high speed protective cover. **(TIPS: Keep the high speed protective and screw for future use)**

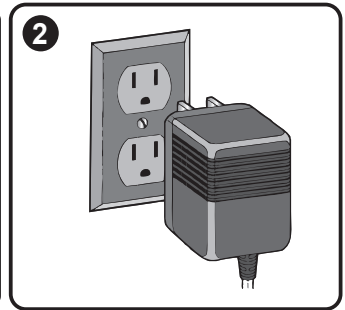
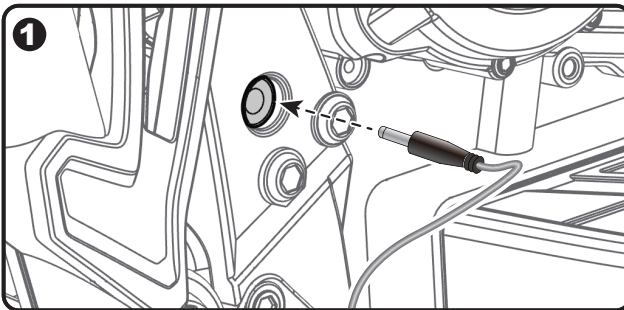
Then you can press the switch into the “high speed” position.

Now the product will move in high speed (about 6km/h).

WARNING!

- **ONLY an adult is allowed charge and recharge the battery!**
- **This product with Charging Protection: when charging, all functions will be cut off.**

- The POWER SWITCH must be turned in OFF position when charging.
- Before the first use, you should charge the battery for 4-6 hours. Do not recharge the battery for more than 10 hours to avoid overheating the charger.
- When the vehicle begins to run slowly, recharge the battery.
- After each use or once a month minimum recharge time as 8 to 12 hours, less than 20 hours at most.
- Use only battery(ies) and charger specified by the manufacturer. Using another battery or charger may cause a fire or explosion. Do not use the battery or charger for any other product.



1. Plug the charger port into the input socket (the socket is above the right foot pedal).
2. Plug the charger plug into a wall outlet. The battery will begin charging.

Battery Disposal



The battery will eventually lose the ability to hold a charge. Depending on the amount of use, and varying conditions, the battery should operate for one to three years.

Important! Recycle the dead battery responsibly. The battery contains lead acid (electrolyte) and must be disposed of properly and legally. It is illegal in most areas to incinerate lead acid batteries or dispose of them in landfills. Take it to a federal or state-approved lead acid battery recycler, such as local automotive battery retailer.

Do not throw the battery away with your regular household waste!

Problem	Possible Cause	Solution
Vehicle does not run	Battery low on power	Recharge battery.
	Thermal fuse has tripped	Reset fuse, see <Fuse>
	Battery connector or wires are loose	Check that the battery connectors are firmly plugged into each other. If wires are loose around the motor contact your distributor please.
	Battery is dead	Replace battery, contact your distributor please.
	Electrical system is damaged	Contact your distributor please.
	Motor is damaged	Contact your distributor please.
Vehicle does not run very long	Battery is under charged	Check that the battery connectors are firmly plugged into each other when recharging
	Battery is old	Replace battery, contact your distributor please.
Vehicle runs sluggishly	Battery low on power	Recharge battery, contact your distributor please.
	Battery is old	Replace battery, contact your distributor please.
	Vehicle is overload	Reduce weight on vehicle.
	Vehicle is being used in harsh conditions	Avoid using vehicle in harsh conditions, see <Safety>.
Vehicle needs a push to go forward	Poor contact of wires or connectors	Check that the battery connectors are firmly plugged into each other. If wires are loose around the motor, contact your distributor please.
	“Dead Spot” on motor	A dead spot means the electric power is not being delivered to the terminal connection and the vehicle needs repair. Contact your distributor please.
Difficult shifting from forward to reverse or vice-versa	Attempting to shift while the vehicle is motion	Completely stop the vehicle and shift, see <Use Your Ride-On>
Loud grinding or clicking noises coming from motor or gear box	Motor or gears are damaged	Contact your distributor please.
Battery will not recharge	Battery connector or adapter connector is loose	Check that the battery connectors are firmly plugged into each other.
	Charger not plugged in	Check that the battery charger is plugged into a working wall outlet.
	Charger is not working	Contact your distributor please.
Charger feels warm when recharging	This is normal and not a cause for concern	

Completely read through this manual and the troubleshooting guide table before calling. If you still need help resolving the problem **Contact your distributor please.**

- It is parents' responsibility to check main parts of the toy before using, Must regularly examine for potential hazard, such as the battery, charge, cable or cord, plug, screws are fastening enclosure of other parts and that in the event of such damage, the toy must not be used until that damage had been properly removed.
- Park the vehicle indoors or cover it with a tarp to protect it from wet weather.
- Recharge the battery after each use. Only an adult can handle the battery. Recharge the battery at least once a month when the vehicle raider is not being used.
- Do not wash the vehicle with a hose. Do not wash the vehicle with soap and water. Do not drive the vehicle in rainy or snowy weather. Water will damage the motor, electric system and battery.
- Clean the vehicle with a soft, dry cloth. To restore shine to plastic parts, use a non-wax furniture polish. Do not use car wax. Do not use abrasive cleaners.
- When not using, all the electrical source should be turn off. Turn off the power switch and disconnect the battery connection.

Fuse

The battery features a thermal fuse with a reset fuse that will automatically trip and cut all power to the vehicle if the motor, electric system or battery is overloaded. The fuse will reset and power will be restored after the unit is turned OFF for 20 seconds and then turned ON again. If the thermal fuse trips repeatedly during normal use, the vehicle may need repair. Contact your distributor please.

To avoid losing power, follow these guidelines:

- Do not overload the vehicle.
- Do not tow anything behind the vehicle.
- Do not drive up steep slopes.
- Do not drive into fixed objects, which may cause the wheels to spin, causing the motor to overheat.
- Do not drive in very hot weather, components may overheat.
- Do not allow water or other liquids to come in contact with the battery or other electric components.
- Do not tamper with the electric system. Doing so may create a short, causing the fuse to trip.

**Our products are suitable for
ASTM F963; GB6675; EN71 and EN62115 standard.**